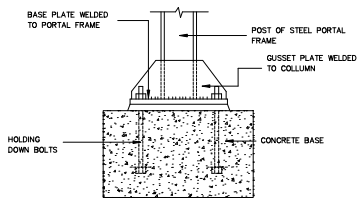
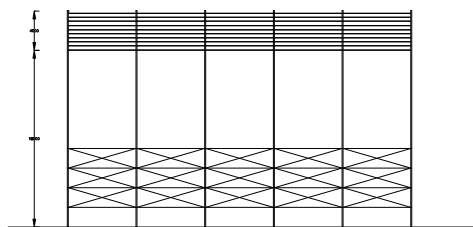
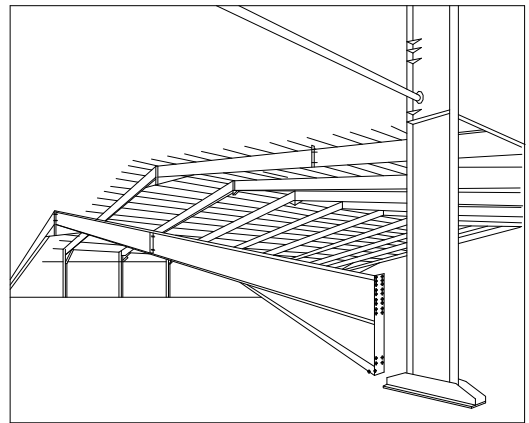


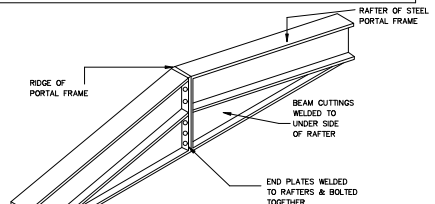
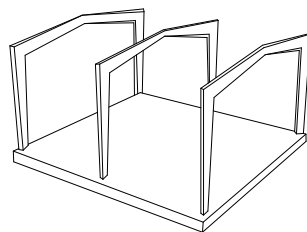
PLAN (1:100)



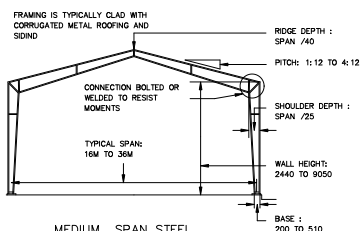
STIFFENED BASE PLATE
DETAIL (1:10)



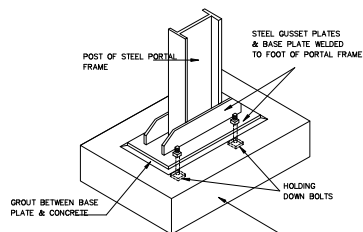
ELEVATION (1:100)



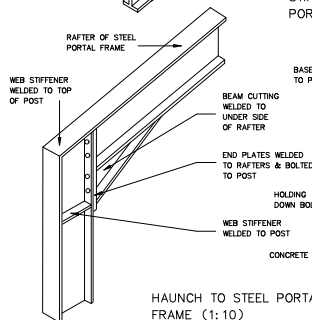
STIFFING AT RIDGE OF STEEL
PORTAL FRAME (1:10)



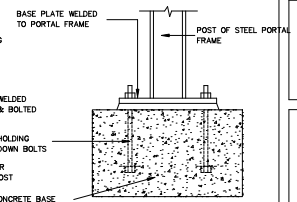
MEDIUM SPAN STEEL
PORTAL FRAME (1:200)



FIXED BASE TO STEEL
PORTAL FRAME (1:10)



HAUNCH TO STEEL PORTAL
FRAME (1:10)



UNSTIFFENED BASE PLATE
DETAIL (1:10)

COURSE :
ADVANCED
BUILDING
CONSTRUCTION - I
TOPIC :
PORTAL FRAME

NOTE :
TYPES OF PORTAL
FRAME :
■ SHORT-SPAN PORTAL FRAME
SPAN : UP TO 15M
SPACING : 3M TO 5M
■ MEDIUM-SPAN PORTAL FRAME
SPAN : 16M TO 36M
SPACING : 4M TO 8M
■ LONG-SPAN PORTAL FRAME
SPAN : 36M TO 60M
SPACING : 8M TO 12M

SUBMITTED TO :
REMARKS :

DATED :

SUBMITTED BY :

NOTE :
ALL DIMENSIONS ARE
IN MM

SHEET NO :

03